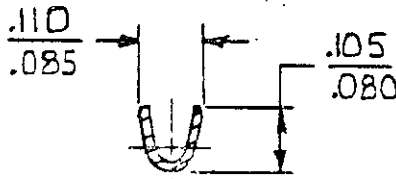
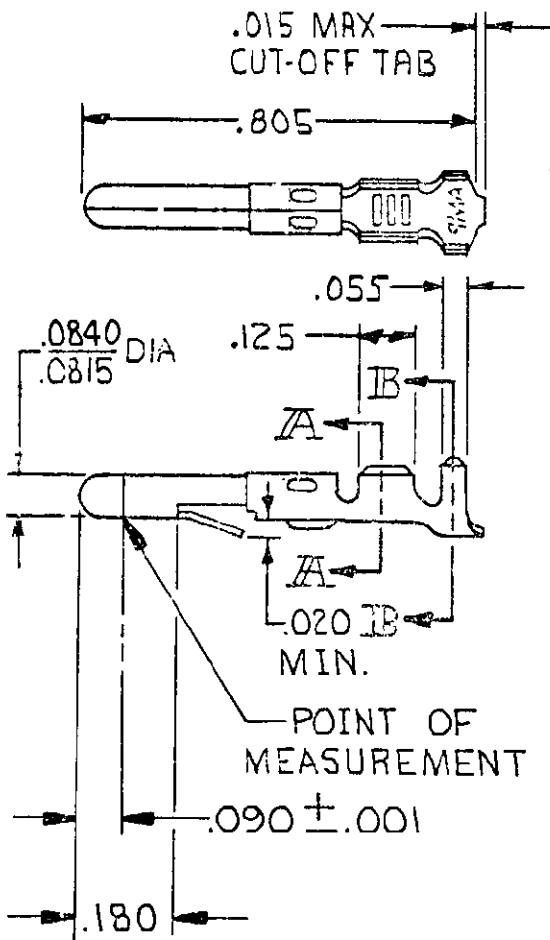


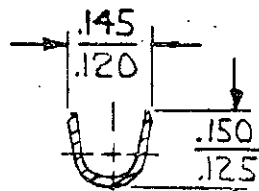
© COPYRIGHT

REVISIONS

LTR	DESCRIPTION	DATE	APPROVED	P/F
S1	REVISED PER ECO-11-005294	05APR11	HMR	



SECT. A-A



SECT. B-B

- ① .000030 GOLD INSIDE WIRE BARREL & ON TIP OF PINS; REMAINDER OF CONTACT IS NICKEL PLATED.
- ② .000050 NICKEL OVER ENTIRE CONTACT WITH .000030 GOLD OVER MATING AREA.

GOLD	②	.012 PH. BRZ	60618 -6
GOLD	①	BRASS	-5
PRE-TIN		PH. BRZ	-4
PRE-TIN		.012 BRASS	60618 -1
FINISH		MATERIAL	PART NO

UNLESS OTHERWISE SPECIFIED DIMENSIONS ARE IN INCHES. TOLERANCES ON: DECIMALS ± .015 ANGLES ±

CONTRACT NO
DR *M. FEHER 11-26-79*
CHK *D. Heide 1/4/80*

TE TE Connectivity

MATERIAL
SEE TABLE

APPD *[Signature]* 1-7-80
APPD

NAME
PIN, LOOSE PIECE, COMMERCIAL MATE-N-LOK

FINISH
SEE TABLE

INSULATION DIA
.100 MAX
WIRE RANGE
24-18 AWG.

SIZE **A** CODE IDENT NO **00779** DRAWING NO **60618**
SCALE SHEET